



University Extension
Professional Studies

APPLY YOUR INDUSTRY EXPERTISE

Designated Subjects CTE and Special Subjects Bridge – Track B



CTE programs play a crucial role in helping businesses close the skills gap by building a competitive workforce of skilled individuals. CTE builds positive relationships, increases student engagement, ignites students' career goals, and creates opportunities for student success.

The DS “Bridge” program is for teachers holding a Clear Single or Multiple Subject credential with an EL Authorization who qualify for a DS CTE authorization based on their professional expertise in one of the 15 industry sectors. This program provides a modified option for teachers who have already mastered pedagogy and who want to prepare students for careers in technical and professional fields, and/or the military. Coursework emphasizes the Eleven High Quality Elements of CTE as outlined in the California State Plan for CTE, and current issues such as work-based learning, the impact of the labor market, and managing diverse and active learning environments.

WHAT YOU’LL LEARN

Curriculum development and instructional planning skills related to developing occupational oriented knowledge and skills in developing lesson plans

Strategies for planning instruction, which is relevant to the diverse needs of students and various occupations

Classroom management strategies to develop and maintain a safe and effective learning environment

Concepts surrounding the CTE and Special Subject professions with highlights touching on the legal and ethical issues in the field

 **TOTAL UNITS**
12

 **TUITION**
\$1,800

 **COMPLETION TIME**
24 months

 **FORMAT**
Online



CONNECT WITH A COACH
extension.ucr.edu/coach

Designated Subjects CTE and Special Subjects Bridge — Track B



BENEFITS OF EARNING A CERTIFICATE

There are several reasons why, Bachelor's degree in hand, you might be considering continuing your studies. An upgraded education section on your resume can open the door to a new career, or, if you're already working, lead to a promotion and a higher salary. While you're working, going back to school is an excellent way to stay current in rapidly changing fields, or, if you've been away from the workforce for a while, to quickly get caught up in the latest trends, concepts, and advances.

While there are as many paths to follow, as there are reasons to follow them when approaching continuing education, there is enormous value in terms of time, financial investment, and personal flexibility while gaining practical training from working professionals in your industry that extends beyond the theory of the classroom and into the real world.

KEY BENEFITS INCLUDE:

- UC quality curriculum
- Professional endorsements
- Schedule flexibility
- Variety of courses and programs
- Instruction from professional leaders in the industry

PAY AS YOU GO



Pay per individual course as you register.

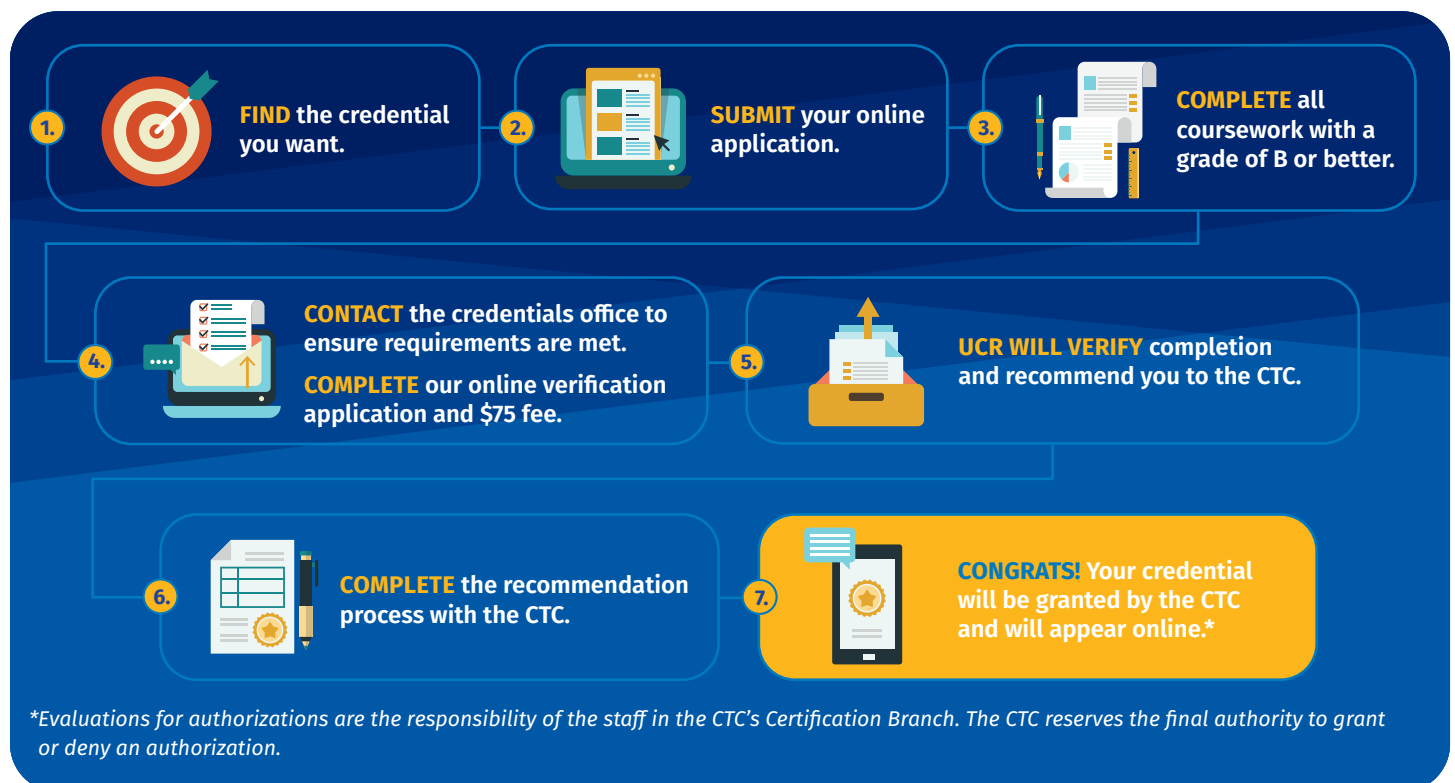
AVERAGE COURSE TUITION

\$595-645 PER (4.5 UNIT) COURSE

*Learn more about [tuition assistance](#).

STEPS TO A CTC-APPROVED CREDENTIAL

Follow these seven steps and you will be on your way to adding a new credential to your resume.



*Evaluations for authorizations are the responsibility of the staff in the CTC's Certification Branch. The CTC reserves the final authority to grant or deny an authorization.

Designated Subjects CTE and Special Subjects Bridge — Track B



STUDY PLAN

Our certificate programs are designed to be flexible, allowing you the option to take just a few courses or earn the complete certificate. If choosing to complete the certificate, we recommend you get the most out of your experience by following the suggested completion path below.

| Required Courses | | |
|------------------|--|-------|
| QUARTER | | UNITS |
| 1 | Orientation for Designated Subjects Credentials Program EDUC X427 | 0 |
| | DS Career Technical Education Core for Single/Multiple Subject Teachers EDUC X309.08 | 4.5 |
| 2 | Implementation of Health Instruction Framework for California Schools EDUC X451.01 | 2 |
| | SDAIE — Specially Designed Academic Instruction Delivered in English to English Learners for SB1292 Staff Development Certificate of Completion EDUC X426.21 | 4.5 |
| 3 | CPR and Basic First Aid EDUC X351.4 | 1 |
| | U.S. Constitution Examination EDUC X451 | 0 |

ARE YOU READY FOR YOUR NEXT STEP?

Schedule an appointment with a **Student Success Coach** to get started. extension.ucr.edu/coach



*For a full list of policies and procedures, check our [website](#).