



University Extension
Professional Studies

BRIDGE THE GAP FOR ENGLISH LEARNERS

CLAD Through CTETL Authorization



Embracing a new language, new surroundings, and new academic material can be overwhelming. Students acclimating to a new culture and language require differentiated instruction in the classroom to provide the best learning outcome for optimal success. Build the skills to provide effective learning tools and skills for English Learners.

The CLAD-CTETL Authorization is designed to meet the English Learner (EL) Authorization academic requirements of the Commission on Teacher Credentialing (CTC) for training teachers in the methods of language development and academic instruction to benefit English Learners. We are proud to offer several options to earn the CLAD through CTETL Authorization including the “Blended” option. In the past, teachers were required to pass ALL subtests of the CTETL exam or complete ALL of the required coursework to become certified; however, recent changes to the program have made it possible to combine passing CTETL exam subtests with UCR coursework in an effort to accommodate varying situations of teaching professionals.

WHAT YOU’LL LEARN

Language systems, forms and functions

Factors that impact second language development

Effective assessment tools and strategies for English Learners

Methods for academic content instruction



TOTAL UNITS
18



TUITION
\$3,200



COMPLETION TIME
9-12 months



FORMAT
Online



CONNECT WITH A COACH
extension.ucr.edu/coach

CLAD Through CTEL Authorization



CONNECT WITH A COACH
extension.ucr.edu/coach

BENEFITS OF EARNING A CERTIFICATE

There are several reasons why, Bachelor's degree in hand, you might be considering continuing your studies. An upgraded education section on your resume can open the door to a new career, or, if you're already working, lead to a promotion and a higher salary. While you're working, going back to school is an excellent way to stay current in rapidly changing fields, or, if you've been away from the workforce for a while, to quickly get caught up in the latest trends, concepts, and advances.

While there are as many paths to follow, as there are reasons to follow them when approaching continuing education, there is enormous value in terms of time, financial investment, and personal flexibility while gaining practical training from working professionals in your industry that extends beyond the theory of the classroom and into the real world.

KEY BENEFITS INCLUDE:

- UC quality curriculum
- Professional endorsements
- Schedule flexibility
- Variety of courses and programs
- Instruction from professional leaders in the industry

PAY AS YOU GO



Pay per individual course
as you register.

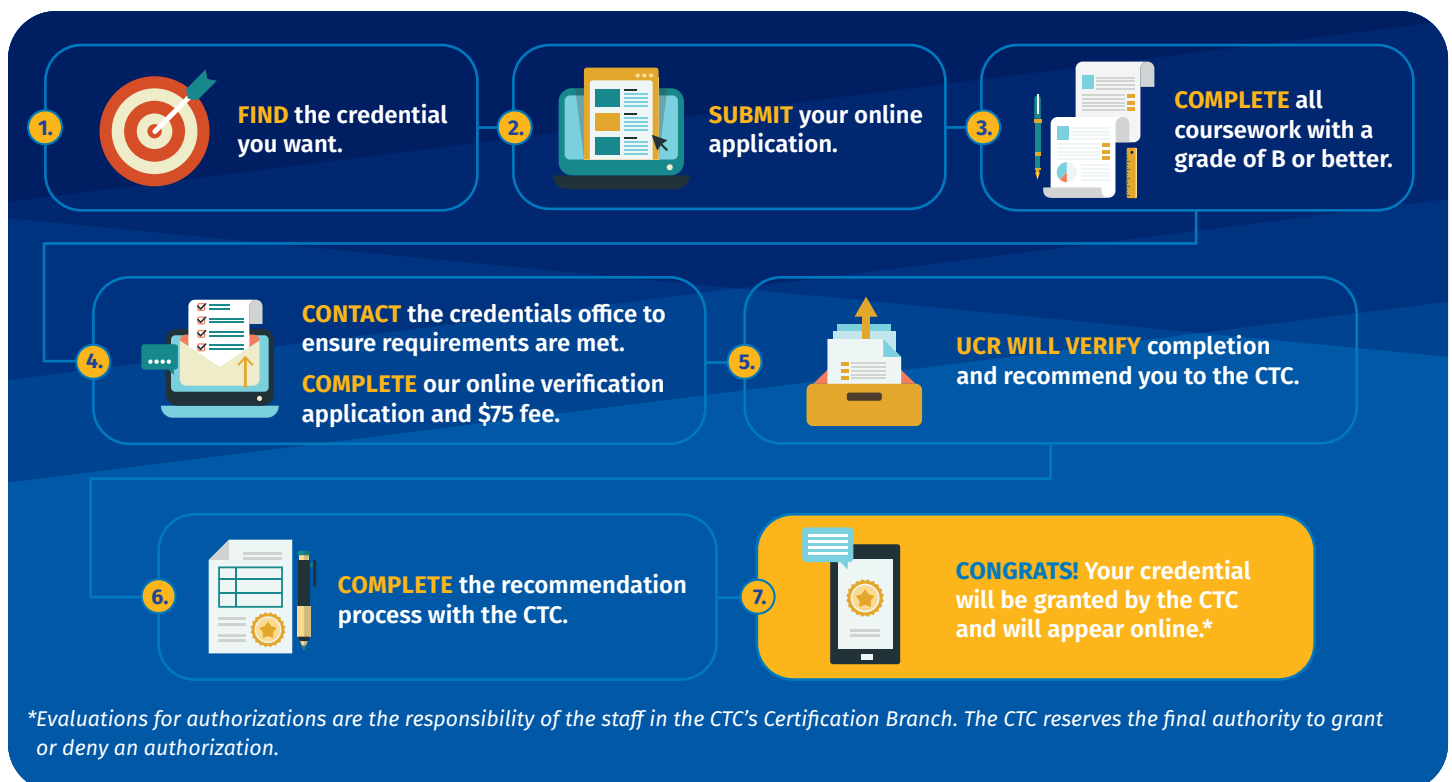
AVERAGE COURSE TUITION

\$595-645 PER (4 UNIT) COURSE

*Learn more about [tuition assistance](#).

STEPS TO A CTC-APPROVED CREDENTIAL

Follow these seven steps and you will be on your way to adding a new credential to your resume.



*Evaluations for authorizations are the responsibility of the staff in the CTC's Certification Branch. The CTC reserves the final authority to grant or deny an authorization.



CLAD Through CTEL Authorization



STUDY PLAN

To complete the certificate, we recommend you get the most out of your experience by following the suggested completion path below.

Required Courses		
QUARTER		UNITS
1	Orientation: CLAD Through CTEL EDUC X426.A	0
	Culture and Inclusion EDUC X426	4
2	Language and Language Development EDUC X426.1	4
	Assessment of English Language Learners EDUC X426.2	3
3	Foundations of English Language Development and Methods for Content Instruction EDUC X426.3	6
	CLAD Through CTEL Portfolio EDUC X426.9	1

ARE YOU READY FOR YOUR NEXT STEP?

Schedule an appointment with a [Student Success Coach](#) to get started. extension.ucr.edu/coach



*For a full list of policies and procedures, check our [website](#).